

HYDROFLUX[®]



Welcome to Hydroflux Engineering Pvt Ltd.

Backed by over a decade of expertise in the design, engineering, and manufacturing of advanced water treatment systems, Hydroflux is committed to quality, innovation, and sustainability. We specialize in Effluent Treatment Plants (ETP), Sewage Treatment Plants (STP), Demineralization (DM) Plants, Reverse Osmosis (RO) Plants, Water Softeners, and Water Treatment Plants (WTP).

Our skilled professionals expertise in providing high-performance solutions for efficient water management, environmental compliance, and operational reliability. Our systems are engineered to meet the specific needs of diverse industries, including Food & Beverage, Pharmaceuticals, Automobiles, Chemicals, Paint & Coating, Education, Hospitality, Oil & Gas, Textiles, and Pulp & Paper.

Our Vision

We, at Hydroflux Engineering, aspire to be a global leader in water and wastewater treatment solutions, empowering industries and communities to achieve sustainable growth through innovation, technology, and a commitment to environmental sustainability.

Our aim for the future is one where every drop of water is valued, treated, and reused responsibly, contributing to a cleaner and greener planet.

Our Mission

Hydroflux Engineering is committed to revolutionising the water treatment industry through innovative, reliable, and sustainable water solutions that consistently exceed our clients' expectations. Our focus on product quality, continuous innovation, and a client-focused approach ensures we deliver the best possible service to communities worldwide. We aim to help our clients achieve their water treatment goals efficiently, responsibly, and cost effectively.

We are dedicated to fostering long-term client relationships by providing innovative solutions that promote environmental responsibility. We strive to inspire positive transformation and contribute to a cleaner, healthier, and more sustainable future for generations to come.

Our Business Association





Effluent Treatment Plant is designed to treat industrial wastewater efficiently, ensuring compliance with environmental norms and promoting sustainable operations. Our ETP solutions help industries minimize water pollution, reduce operational costs, and enable water reuse, supporting a cleaner and greener tomorrow.



Effluent Treatment Plant

Specifications

Flow Range: 5 KLD To 5 MLD.

Materials: FRP/SS/MSRL/MSEP and Civil Construction.

Operation: Semi -automatic /Fully automatic Plants

Service: Support Available

Maintenance: Complimentary AMC for the initial Year

Installation & Commissioning: Included as part of the projects free of charge.

Applications

- Textile & Dyeing
- Chemical & Pharmaceutical
- Food & Beverage
- Pulp & Paper
- Leather & Tanneries
- Automotive & Metal Finishing

Technology



Industrial ETP Plant



CETP Plant



Compact ETP Plant



Sewage Treatment Plant (STP) is designed to treat domestic and municipal wastewater efficiently, ensuring clean water discharge and compliance with environmental standards. Our STPs help communities, residential complexes, and industries achieve sustainable water management solutions by enabling water reuse and protecting natural water bodies.



Sewage Treatment Plant

Specifications

Flow Range: 5 KLD To 5 MLD.

Materials: FRP/SS/MSRL/MSEP and Civil Construction.

Operation: Semi -automatic /Fully automatic Plants.

Service: Support Available

Maintenance: Complimentary AMC for the initial Year.

Installation & Commissioning: Included as part of the projects free of charge.

Applications

- Residential Complexes & Housing Societies
- Hotels & Resorts
- Hospitals & Healthcare Facilities
- Educational Institutions
- Municipal Corporations
- Industrial Facilities & IT Parks
- Public Transport System

Technology



MBBR STP Plant



MBR STP Plant



SBR STP Plant



Zero Liquid Discharge (ZLD) Plant is an advance solution designed to ensure complete elimination of wastewater from industrial processes. By recovering and recycling every drop of water, our ZLD systems help industries meet strict environmental regulations, conserve water resources, and operate sustainably.



Zero Liquid Discharge

Specifications

Flow Range: 5 KLD To 5 MLD.

Materials: FRP/SS/MSRL/MSEP and Civil Construction.

Operation: Semiautomatic /Fully automatic Plants.

Service: Support Available

Maintenance: Complimentary AMC for the initial Year.

Installation & Commissioning: Included as part of the projects free of charge.

Applications

- Power Plants & Thermal Stations
- Textiles & Dyeing Units
- Chemicals & Petrochemicals
- Pharmaceuticals
- Leather & Tanneries
- Food & Beverage Industries



Water Treatment Plant (WTP) is designed to treat raw water from natural sources such as rivers, lakes, wells, or industrial supply lines, converting it into safe, high-quality water for domestic, commercial, and industrial use. Our advanced WTP systems ensure efficient removal of impurities, meeting stringent quality standards while promoting sustainable water management.



Water Treatment Plant

Specifications

Flow Range: 5 KLD To 5 MLD.

Materials: FRP/SS/MSRL/MSEP and Civil Construction.

Operation: Semi -automatic /Fully automatic Plants

Service: Support Available.

Maintenance: Complimentary AMC for the initial Year

Installation & Commissioning: Included as part of the projects free of charge.

Applications

- Municipal & Community Drinking Water Supply
- Housing Societies & Residential Complexes
- Industrial Process Water
- Hotels, Resorts, and Commercial Buildings
- Educational Institutions & Hospitals
- Power Plants & Manufacturing Units



Industrial Reverse Osmosis (RO) Plant is a high-performance water purification system designed to produce clean, mineral-free, and high-quality water for various industrial applications. Designed with advanced RO technology, our plants ensure reliable and cost-effective water treatment, meeting stringent quality standards while supporting sustainable operations.



Industrial RO Plant

Specifications

Flow Range: 500LPH To 100m³/hr.

Materials: FRP/SS/MSRL/MSEP and Civil Construction.

Operation: Semi -automatic /Fully automatic Plants.

Service: Support Available.

Maintenance Complimentary AMC for the initial Year.

Installation & Commissioning :Included as part of the projects free of charge.

Applications

- Municipal & Community Drinking Water Supply
- Housing Societies & Residential Complexes
- Industrial Process Water
- Hotels, Resorts, and Commercial Buildings
- Educational Institutions & Hospitals
- Power Plants & Manufacturing Units

Technology



Industrial RO Plant



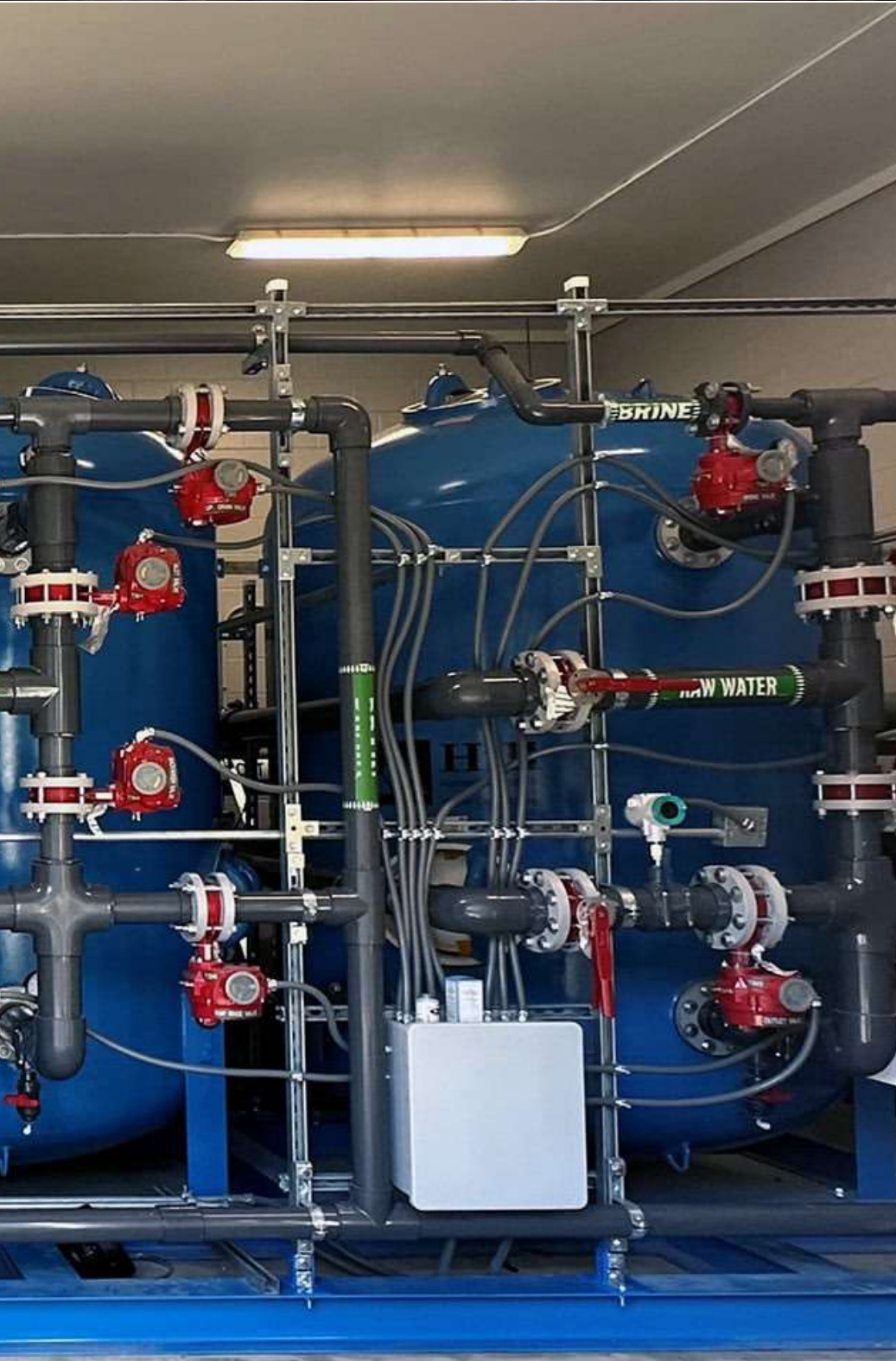
Seawater Desalination RO Plant



Stainless Steel RO Plant



Water Softener Plant is an advanced solution designed to remove hardness causing minerals like calcium and magnesium from water. By delivering soft, high-quality water, our plants help protect equipment, reduce scaling, and improve operational efficiency across a wide range of industrial and commercial applications.



WATER SOFTNER PLANT

Specifications

Flow Range: 500LPH To 1000m3/hr.

Materials: FRP/SS/MSRL/MSEP and Civil Construction.

Operation: Semi -automatic /Fully automatic Plants.

Service: Support Available.

Maintenance: Complimentary AMC for the initial Year.

Installation & Commissioning: Included as part of the projects free of charge.

Applications

- Boilers & Cooling Towers
- Textile & Dyeing Units
- Food & Beverage Industry
- Hotels & Hospitals
- Pharmaceuticals
- Commercial & Residential Buildings



Demineralization (DM) Plant is a high-performance water purification system designed to remove dissolved salts, minerals, and impurities, producing ultra-pure water for industrial and commercial applications. Using advanced ion-exchange technology, our DM plants ensure consistent water quality, safeguarding processes and equipment that demand the highest purity standards.



Demineralization Plant

Specifications

Flow Range: 250LPH To 100m³/hr.

Materials: FRP/SS/MSRL/MSEP and Civil Construction.

Operation: Semi -automatic /Fully automatic Plants.

Service: Support Available

Maintenance: Complimentary AMC for the initial Year.

Installation & Commissioning: Included as part of the projects free of charge.

Applications

- Hospitality Industry
- Pharmaceuticals & Healthcare
- Electronics & Semiconductor
- Food & Beverage Production
- Chemical & Petrochemical Industries
- Laboratories & Research Facilities
- Automobile Industry
- Commercial Washing Units Industry



Ultrafiltration Plants are used in both pre-treatment and post-treatment stages of water purification. We design, supply, and install custom-made Ultrafiltration (UF) Systems with capacities of up to 100 m³/hr. Our units can be semi- or fully-programmable and are equipped with advanced PLC control systems for efficient and automated operation.



ULTRA FILTRATION SYSTEM

Specifications

Flow Range: 250LPH to 100m³/hr

Materials: FRP/SS/MSRL/MSEP and Civil construction.

Operation: Semi - automatic / fully automatic plants

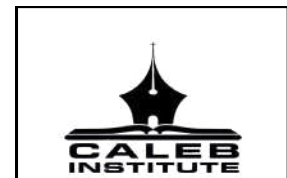
Maintenance: Free AMC for first year and Installation

Installation & Commissioning :Included as part of the projects free of charge.

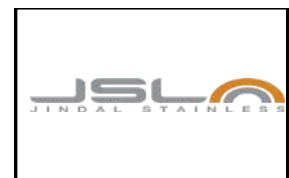
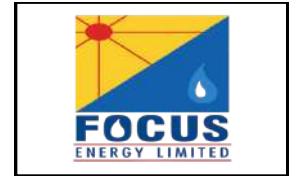
Applications

- Output of STP
- Output of ETP
- Inlet of RO
- Output of WTP

Our Clients



Our Clients



many more ...

Our Associates Brands

ROTOMAC®

ZOLOTO®
VALVES
since 1966

GRUNDFOS

@dose®
Electronic Metering Pump

wilo

DEERFOS
MEMBRANES

PENTAIR

Roto®
pumps
since 1968

Nitto
Innovation for Customers
HYDRANAUTICS

MILTON ROY
An Ingersoll Rand Business

Schneider
Electric

KSB

Lubi®

'TORAY'
Innovation by Chemistry

SIEMENS

dp pumps

AKASH

POLYCAB

KP
KRANTI
DD VALVES | FITTINGS

Crompton

Sintex

Kirloskar

ASTRAL
PIPES

FINOLEX
PIPES & FITTINGS

KROHNE

Equipments



TUBE SETTLER MEDIA



**MECHANICAL BAR
SCREEN**



**PLATE & FRAME TYPE
FILTER PRESS**



**SLUDGE DEWATERING
SCREW PRESS**



CENTRIFUGE MACHINE



**MANUAL
MULTIPORT VALVE**



**BELT TYPE OIL
SKIMMER**



**COURSE BUBBLE
DIFFUSERS**



**DISOLVE AIR
FLOATATION SYSTEM**



AGITATOR MIXER



**AUTOMATIC
MULTIPORT VALVE**



DOSING PUMP



ETP & STP PANEL



CABLES



CABLE TRAYS



ION EXCHANGE RESIN



PRESSURE GAUGE



**TWIN LOBE AIR
BLOWER**



**FILTER &
MBBR MEDIA**



PUMPS



RO MEMBRANE



UF MEMBRANE



MBR MEMBRANE



**PH BOOSTER & POLY
ANTI-SCALANT**



**LIME, ALUM & CASTIC
SODA**



Delhi Office:

Plot no.3 (3rd floor), 100 ft Road, Opposite Union

Bank Ghitorni, New Delhi India. Pin:110030

Land line: 011 44463328

 +91 9910309543

 www.hydroflux.co.in

Mumbai Office:

Haware Infotech park, Office no- 1106, 11th floor. Near

by Vashi railway Station, Vashi, Navi Mumbai-400703

Land line: 022 4978 3309

 support@hydroflux.co.in

